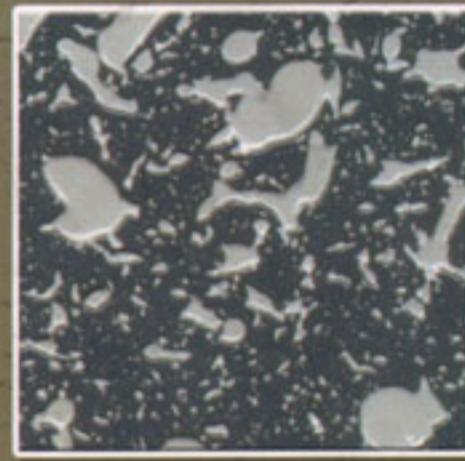
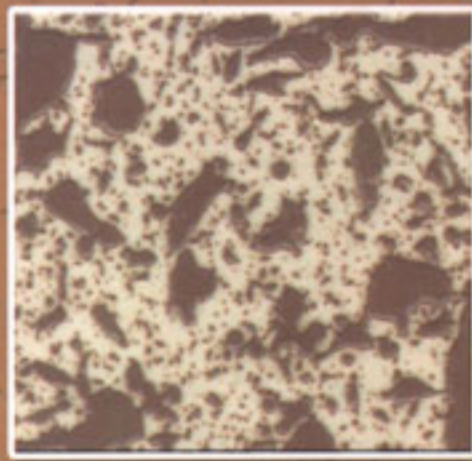
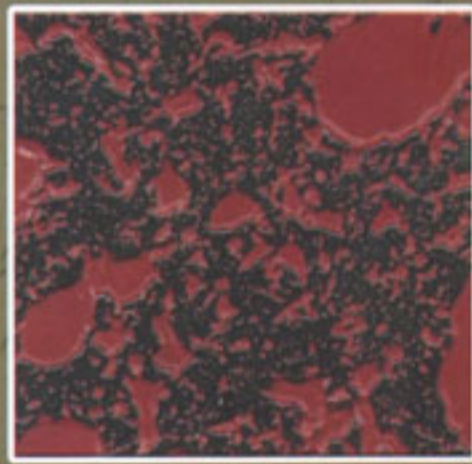


دهانات

ALVA

PAINTS



Epoxy System

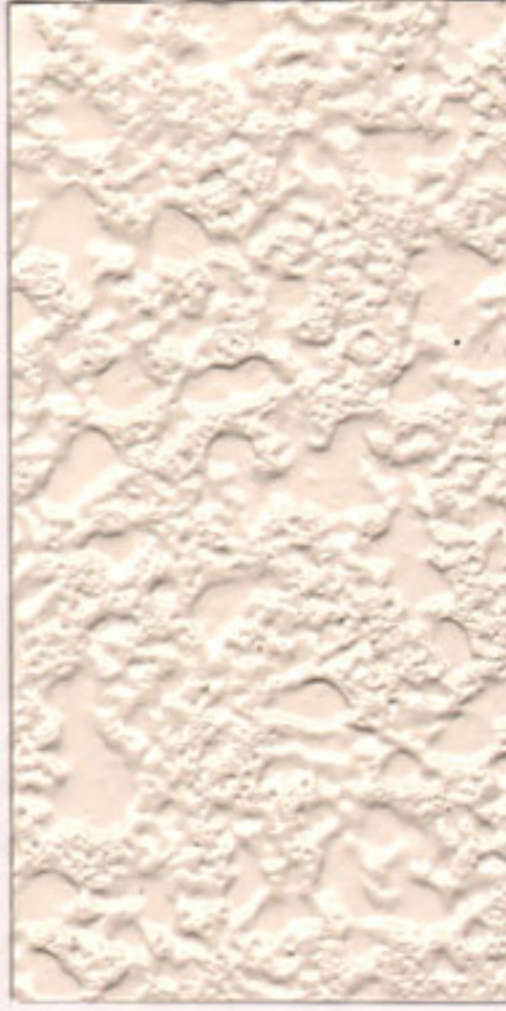
LONG LASTING PROTECTION

دهانات ألفا

إيبوكسي سيستم



10 B 15



08 B 15



08 E 49



MARBLE RED



MARBLE BLACK



MARBLE GREY

جميع الألوان متوفرة بما فيها ألوان الرال (RAL) والألوان القياسية (B.S.)

ALVA PAINTS EPOXY SYSTEM



800 WHITE (PRESSED)



800 WHITE (UNPRESSED)



20 C 33



06 C 33



08 B 17



00 A 01

ALL COLORS ARE AVAILABLE INCLUDING RAL & BS STANDARD

Tile Coating Systems

ALVACRYL TOP

PRIMER
ALVA ACRYLIC
PRIMER (W.B.)

MIXING : SINGLE PACK
COVERAGE : 6-7m²/L
THINNER : WATER
APPLICATION : ROLLER/BRUSH

MIDDLE COAT
ALVA SPRAY TEX
(SPRAY TEXTURE)

MIXING : SINGLE PACK
COVERAGE : 1.75m²/L
THINNER : WATER
APPLICATION : SPRAY

TOP COAT
(2 COATS)
ALVACRYL TOP
(SOLVENT BASED)

MIXING : SINGLE PACK
COVERAGE : 6 m²/L PER COAT
THINNER : THINNER NO. 003
APPLICATION : ROLLER/BRUSH

ALVA MOSAIC

PRIMER
ALVA ACRYLIC
PRIMER (W.B.)

MIXING : SINGLE PACK
COVERAGE : 6-7m²/L
THINNER : WATER
APPLICATION : ROLLER/BRUSH

MIDDLE COAT
ALVA SPRAY TEX
(SPRAY TEXTURE)

MIXING : SINGLE PACK
COVERAGE : 1.75m²/L
THINNER : WATER
APPLICATION : SPRAY

TOP COAT
(2 COATS)
ALVA POLYURETHANE
OR
ALVATHANE FINISH
(2-PACK POLYURETHANE)

MIXING : 4:1
COVERAGE : 6-7 m²/L PER COAT
THINNER : THINNER NO. 005
APPLICATION : ROLLER/BRUSH

ALVA TOUGH WALL

PRIMER
ALVA EPOXY PRIMER
(2-PACK EPOXY)

MIXING : 4:1
COVERAGE : 6-7m²/L
THINNER : THINNER NO. 006
APPLICATION : ROLLER/BRUSH

MIDDLE COAT
ALVA EPOXY H.B.
PROTECT
(EPOXY SPRAY TEXTURE)

MIXING : 4:1
COVERAGE : 1.75m²/L
THINNER : THINNER NO. 006
APPLICATION : SPRAY

TOP COAT
(2 COATS)
ALVA POLYURETHANE
OR
ALVATHANE FINISH
(2-PACK POLYURETHANE)

MIXING : 4:1
COVERAGE : 6m²/L PER COAT
THINNER : THINNER NO. 005
APPLICATION : ROLLER/BRUSH

ALVA ECO SYSTEM

PRIMER
ALVA ACRYLIC
PRIMER (W.B.)

MIXING : SINGLE PACK
COVERAGE : 6-7m²/L
THINNER : WATER
APPLICATION : ROLLER/BRUSH

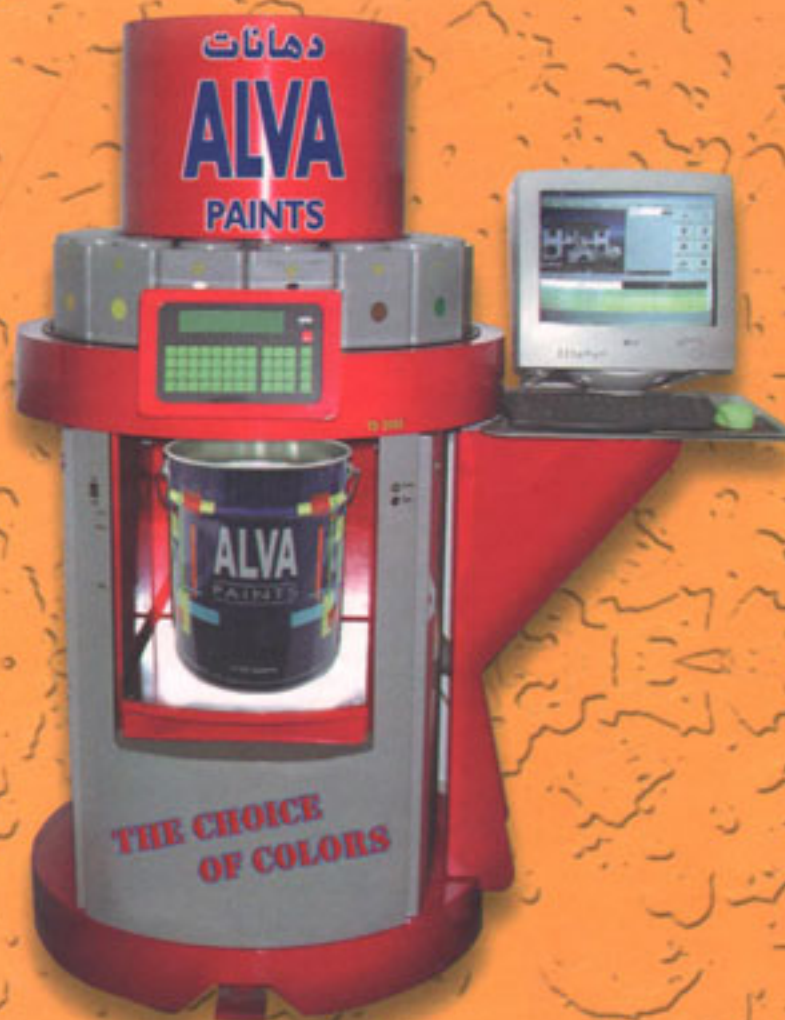
MIDDLE COAT
ALVA SPRAY TEX
(SPRAY TEXTURE)

MIXING : SINGLE PACK
COVERAGE : 1.75m²/L
THINNER : WATER
APPLICATION : SPRAY

TOP COAT
(2 COATS)
ALVA WEATHER RESIST
OR
ALVA SHIELD TOP COAT
(WATER BASE)

MIXING : SINGLE PACK
COVERAGE : 6-7m²/L PER COAT
THINNER : WATER
APPLICATION : ROLLER/BRUSH

Alva Color Tinting System



ALVA PAINTS CO. L.L.C.

Tel : +971 4 2852685 Fax : +971 4 2852148

P.O. Box 60087 Dubai U.A.E.



Certificate Number 2313

